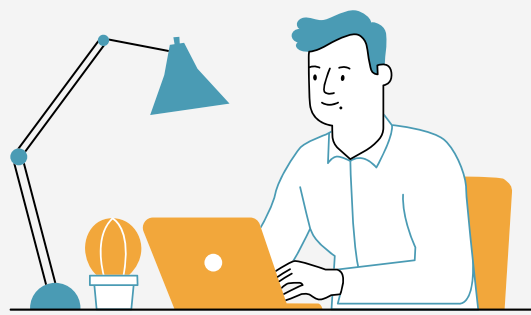


UPEACE Certificate Programmes



Admissions Requirements



English Proficiency Test Scores Report*

- TOEIC and TOEFL-ITP **are not accepted**.
- Test **should not be older than 2 years**.
- TOEFL (PBT, CBT, IBT), Duolingo English Test, Pearson Test of English or Cambridge English Language Assessment.

(If applicable)*



Statement of Purpose

Tell us more about yourself!
Include a statement of purpose **between 500 and 1,000** words, with:

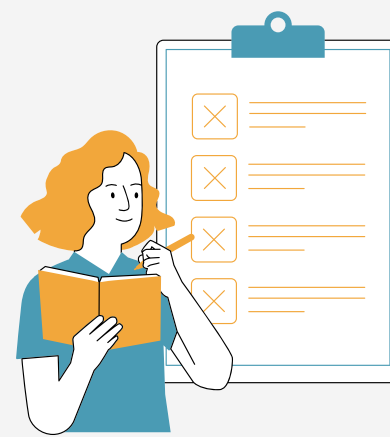
- Name.
- The programme to which they are applying.
- Answer questions about: your expectations, career plans, multicultural exchanges, etc.



Official Undergraduate (Bachelor's Degree). Transcripts of Records*

Transcripts must be from a **3-5-year undergraduate** (bachelor's or equivalent) programme.

Transcripts of Records (English translation if applicable)*



Letters of Recommendation

Two (2) letters of recommendation are required for all applicants. The letters should be from faculty or academic advisors from your educational experience, managers, or other superiors from a professional work environment.



Undergraduate Degree Certificate of Graduation*

Official Undergraduate Degree Certificate bearing the registrar's signature and the school seal must be uploaded to the online application form.

Transcripts of Records (English translation if applicable)*



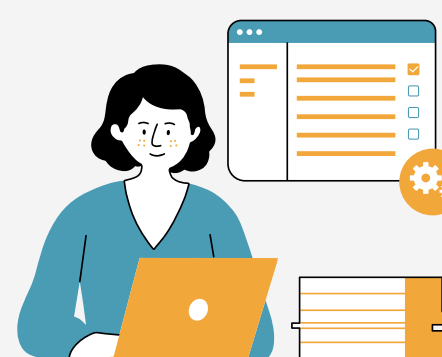
Curriculum Vitae or Resume

Tell us about your academic life in 2 pages or less.



Passport-size photo for ID purposes

One (1) passport size photo.



Copy of Passport

Color photo of the passport page containing the holder's photograph.



Ready?

Fill out our Admissions Form below

[CLICK HERE](#)

Questions?

Send an email to:
admissions@upeace.org

Your journey starts here!

