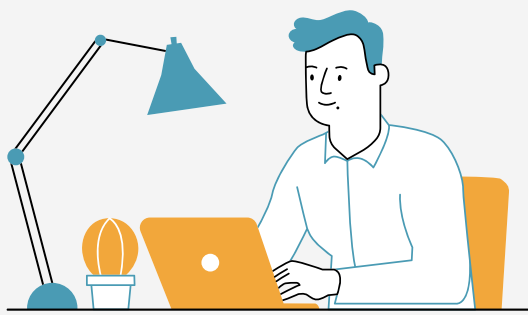


# UPEACE Doctoral Degree Programme



## Admissions Requirements



### English Proficiency Test Scores Report\*

- TOEIC and TOEFL-ITP **are not accepted.**
- Test **should not be older than 2 years.**
- TOEFL (PBT, CBT, IBT), Duolingo English Test, Pearson Test of English or Cambridge English Language Assessment.

(If applicable)\*



### Statement of Purpose

Tell us more about yourself! Include a statement of purpose **between 500 and 1,000** words, with:

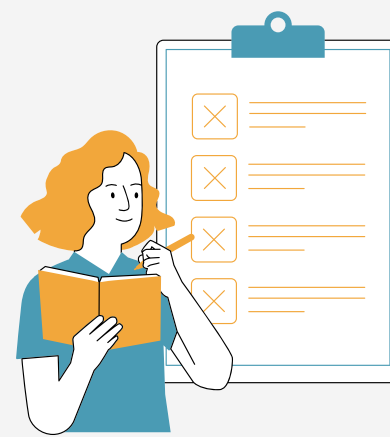
- Name.
- The programme to which they are applying.
- Answer questions about: your expectations, career plans, multicultural exchanges, etc.



### Official Graduate Transcripts and Copy of Graduate Diploma\*

Include your Master's degree.

(English translation if applicable)\*



### Letters of Recommendation

**Two (2) letters of recommendation** are required for all applicants. The letters should be from faculty or academic advisors from your educational experience, managers, or other superiors from a professional work environment.



### Publication/Writing Sample

The publication/writing sample should be on-topic related to the area of study to be pursued at UPEACE. Examples of such pieces would be peer-reviewed journal publications, book chapters, thesis chapters, or reports.



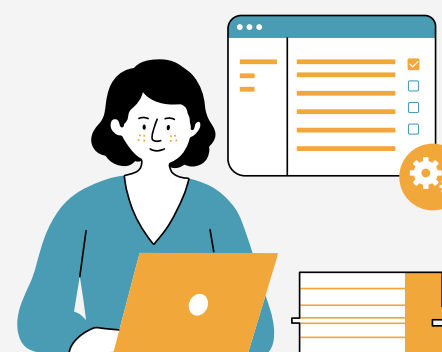
### Curriculum Vitae or Resume

Tell us about your academic life in 2 pages or less.



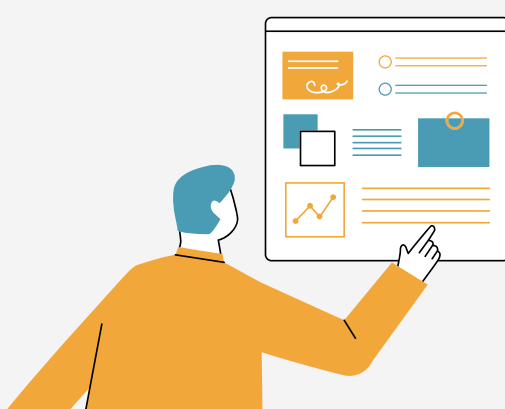
### Passport-size photo for ID purposes

One (1) passport size photo.



### Copy of Passport

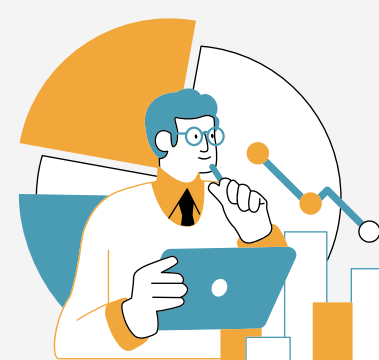
Color photo of the passport page containing the holder's photograph.



### Concept Paper

This document should be comparable to the eventual research proposal. It includes:

- Research Topic.
- Research Objective or Questions.
- Conceptual Framework.
- Methodology.



### Financial Form

Include the financial form in the application.